



# MONTHLY MEMBERSHIP PROGRESS REPORT

Results as of: 3/31/2015

Multiple District 23

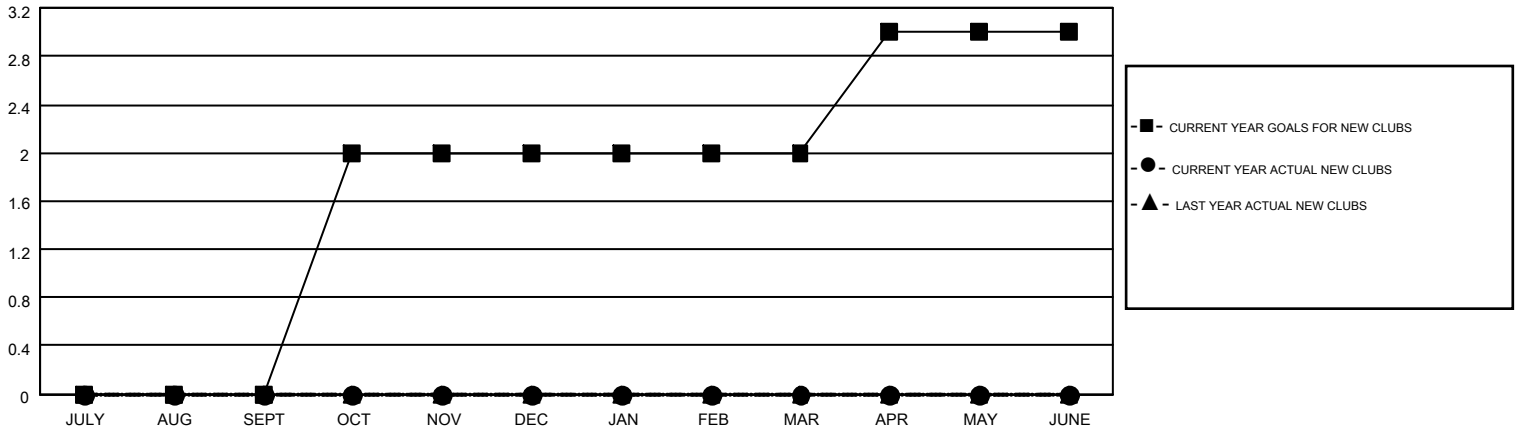
LOCATION: CONNECTICUT

GMT: ED LECIUS

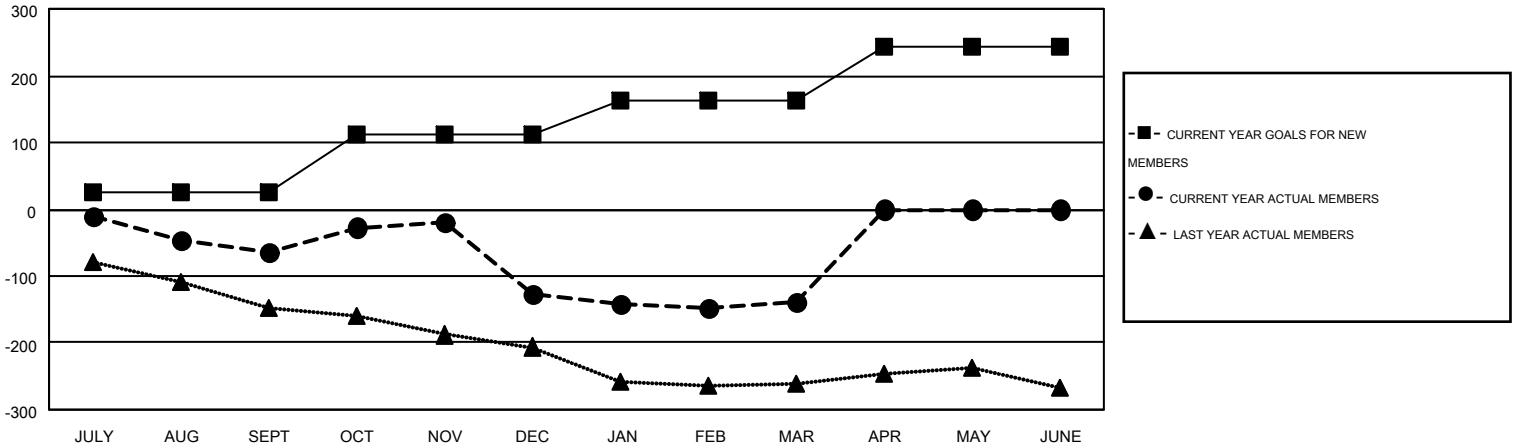
GMT CA 1

| Clubs                 |               |           |               |               | Members               |                 |                               |                 |               |
|-----------------------|---------------|-----------|---------------|---------------|-----------------------|-----------------|-------------------------------|-----------------|---------------|
| RESULTS FOR 2014-2015 |               |           |               |               | RESULTS FOR 2014-2015 |                 |                               |                 |               |
| QUARTER               | NEW CLUB GOAL | NEW CLUBS | DROPPED CLUBS | NET GAIN/LOSS | QUARTER               | NEW MEMBER GOAL | CHARTER AND NEW MEMBERS ADDED | DROPPED MEMBERS | NET GAIN/LOSS |
| JULY/AUG/SEPT         | 0             | 0         | 0             | 0             | JULY/AUG/SEPT         | 25              | 80                            | 143             | -63           |
| OCT/NOV/DEC           | 2             | 0         | 2             | -2            | OCT/NOV/DEC           | 88              | 137                           | 202             | -65           |
| JAN/FEB/MAR           | 0             | 0         | 0             | 0             | JAN/FEB/MAR           | 51              | 91                            | 102             | -11           |
| APR/MAY/JUNE          | 1             | 0         | 0             | 0             | APR/MAY/JUNE          | 80              | 0                             | 0               | 0             |

GOALS AND ACTUAL NEW CLUBS CUMULATIVE



GOALS AND ACTUAL MEMBERS CUMULATIVE



|                        |   |   |                |
|------------------------|---|---|----------------|
| DROPPED CLUBS: 2       | 95 CLUBS OF 154 ADDED 1 OR MORE NEW MEMBERS | <u>GENDER DISTRIBUTION</u>                            |                |
|                        |   | MALE  | 3,481 (68.74%) |
| <u>DROPPED MEMBERS</u> |   | FEMALE  | 1,583 (31.26%) |
| DECEASED               | 47  | <a href="#">CLICK HERE FOR HEALTH ASSESSMENT DATA</a> |                |
| CLUB CANCELLED         | 9   |   |                |
| OTHER                  | 391   |   |                |
| TOTAL                  | 447   | FAMILY UNIT MEMBERS                                   | 805            |
|                        |   | HEAD OF HOUSEHOLD                                     | 389            |
|                        |   | NON-HEAD OF HOUSEHOLD                                 | 416            |